

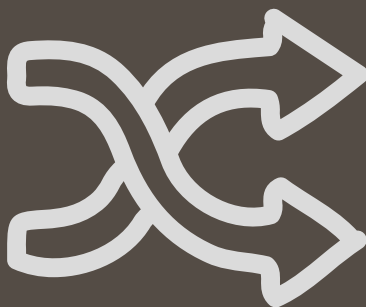
MIRLIMIRLI

FEBRUARY 2021 EDITION



KARIYARRA
Aboriginal Corporation

HEDLAND MARITIME INITIATIVE



KAC has been approached by the Hedland Maritime Initiative (HMI) which is the special purpose vehicle established to administer the Western Australian Government's Port Hedland Voluntary Buy-Back Scheme (PHVBS) and facilitate the planning and development of a Maritime Precinct in the Westend in the Town of Port Hedland. HMI is a wholly-owned subsidiary of Pilbara Ports Authority, a Government Trading Enterprise.

We have been approached for engagement to assist develop Indigenous cultural representation around the area. These discussions are in early stages and the Kariyarra People see this as an opportunity to be seen, heard and acknowledged around this new precinct and in Port Hedland generally.

Hedland
**MARITIME
INITIATIVE**

For more information visit:
<https://hedlandmaritime.com.au/>

WILSON STREET SHARED BIKE PATH



KAC have been approached to discuss the detailed design for cyclists and pedestrians to safely travel between Port and South Hedland is being developed as part of the Wilson Street Shared Bike Path Project, which is being funded equally by the Town and through a Western Australia Bicycle Network (WABN) grant from the Department of Transport.

This Project intends to link the cycle network from Redbank Bridge to Cooke Point Drive and McGregor Street in Port Hedland. Currently, the path from South Hedland ceases at Redbank Bridge and does not extend to Port Hedland.

Once completed, the linked pathway will encourage more residents to cycle and walk between Port and South Hedland, as well as linking tourists to key points of interest where KAC will be suggesting the many Kariyarra cultural points of interest around the area.

SMEC has won the tender to perform the detailed design works and we have begun initial discussions to work with all parties to ensure Kariyarra heritage and cultural sites will be protected during the design and construction of the path.

FMG MAGNETITE SLURRY PIPE

The Iron Bridge project is a magnetite mine in Western Australia in Nyamal Country. It is owned by a joint venture (JV) between FMG Fortescue (69%) and Formosa Steel (31%).

The mine is currently being developed and expanded under a \$2.6bn project (stage two). The Iron Bridge magnetite mine is expected to produce 22 wet million tonnes per annum (wmtpa) of high-grade, magnetite concentrate product.

The ore will be crushed and processed at the site for the production of magnetite, dry process rejects, and wet tailings. The processing plant will use dry crushing and grinding circuit. The concentrate produced from the ore processing facility will be pumped through Kariyarra Country to Port Hedland through a slurry pipeline.

The concentrate slurry will be dried after reaching the concentrate handling facility and the filter cake will be sent to a stockyard within the Pilbara infrastructure port facility, from where it will be reclaimed for export.

NACAP is a company that provides engineering, procurement and construction (EPC) services for large scale pipeline, facilities and wind farm projects in Australia and Papua New Guinea. NACAP have won the tender for the pipeline works and are looking for Indigenous staff for work during the construction of the pipeline.

If you or anyone are interested please call through to Mike Prime (0417 982 831) who is NACAP's manager of Aboriginal Participation.



KARIYARRA TYRECYCLE JOINT VENTURE



We are excited about setting up Kariyarra Tyrecycle (KTC) - a unique partnership established to transform the management of both legacy and ongoing rubber mining waste in Western Australia to better care for Kariyarra Country.

The joint venture will repurpose approximately 40,000 tonnes of waste tyres and potentially even more used conveyor belts which are currently stockpiled, managed in-pit and buried onsite each year in the Pilbara region.

The recent announcement of a \$6,921,845 grant by the Morrison and McGowan Governments to support the establishment of a processing facility by KTC at Port Hedland will drive sustainable solutions to long-standing waste management issues.

In addition to progressing sustainable environmental outcomes, the operation will also provide a strong economic and local jobs boost.

For more information visit:
<https://www.ktc-mining.com.au/>

RANGER REPORT

HELLO, MY NAME IS CAMERON HUGH, AND I AM THE RANGER COORDINATOR. KARIYARRA ABORIGINAL CORPORATION HAS RECENTLY FORMED A RANGER TEAM LED BY MYSELF, AND CURTIS ROBINSON (HEAD RANGER).



I have a background in biology and teaching, with many years' experience working on land management projects with Aboriginal people. I have spent a lot of time in the Pilbara so might be a familiar face.

Curtis Robinson is the Head Ranger, having joined us from Yawuru Ranges where he worked for 8 years. Curtis has a wealth of experience in land management projects and brings many important skills to our ranger group.

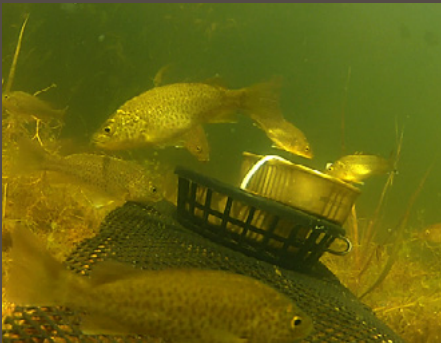


KARIYARRA RANGERS REPRESENTS ALL KARIYARRA PEOPLE AND ARE COMMITTED TO LISTENING TO PEOPLE AND KEEPING COUNTRY HEALTHY. IT IS VERY EARLY DAYS BUT SOME OF THE KEY ACHIEVEMENTS ARE:

- SECURED FUNDING
- PURCHASING OF VEHICLES AND EQUIPMENT
- CONSULTATION WITH KARIYARRA PEOPLE
- EMPLOYMENT OF KARIYARRA PEOPLE

One of the Kariyarra Ranger projects is looking at what species of fish live in the freshwater pools along the Yule River. We do this by using underwater cameras and special nets called fykes.

Recently, 9 rangers travelled along the Yule River selecting 5 suitable sites for fish surveys. During next few months we will survey these pools and record data on the fish species recorded.



WE ARE ALWAYS LOOKING FOR MORE PEOPLE TO DO RANGER WORK SO IF YOU ARE INTERESTED PLEASE COME AND VISIT THE OFFICE..

KEEP LANGUAGE STRONG!

IN THIS EDITION WE HAVE SOME WORDS FOR YOU
AND YOUR FAMILY TO LEARN.

SISTER, OLDER

THURTU

STAR (7 SISTERS)

PINTIRRI

EAGLE

WARINYPIRNA

SPINIFEX

PARU

SUN

YARNTA

SHADE

MARLU

WHERE

WANYJARLA

GOANNA

PIRRIKALARA

AGAIN A BIG THANK YOU TO WANGKA MAYA!
THESE WORDS AND OTHERS ARE AVAILABLE ON THEIR WEBSITE.



If you have any queries or would simply like to connect with Kariyarra
please do not hesitate to email: admin@kariyarra.com.au